

121901-04-0000

The New York State School District Report Card for Walton Central School District

An Overview of Academic Performance



March 2002



The University of the State of New York
The State Education Department

March 25, 2002

THE UNIVERSITY OF THE STATE OF NEW YORK
Regents of The University

CARL T. HAYDEN, <i>Chancellor</i> , A.B., J.D.	Elmira
ADELAIDE L. SANFORD, <i>Vice Chancellor</i> , B.A., M.A., P.D.	Hollis
DIANE O'NEILL MCGIVERN, B.S.N., M.A., Ph.D.	Staten Island
SAUL B. COHEN, B.A., M.A., Ph.D.	New Rochelle
JAMES C. DAWSON, A.A., B.A., M.S., Ph.D.	Peru
ROBERT M. BENNETT, B.A., M.S.	Tonawanda
ROBERT M. JOHNSON, B.S., J.D.	Huntington
ANTHONY S. BOTTAR, B.A., J.D.	North Syracuse
MERRYL H. TISCH, B.A., M.A.	New York
ENA L. FARLEY, B.A., M.A., Ph.D.	Brockport
GERALDINE D. CHAPEY, B.A., M.A., Ed.D.	Belle Harbor
ARNOLD B. GARDNER, B.A., LL.B.	Buffalo
CHARLOTTE K. FRANK, B.B.A., M.S.Ed., Ph.D.	New York
HARRY PHILLIPS, 3rd, B.A., M.S.F.S.	Hartsdale
JOSEPH E. BOWMAN, JR., B.A., M.L.S., M.A., M.Ed., Ed.D.	Albany
LORRAINE A. CORTÉS-VÁZQUEZ, B.A., M.P.A.	Bronx

President of The University and Commissioner of Education

RICHARD P. MILLS

Chief Operating Officer

RICHARD H. CATE

Deputy Commissioner for Elementary, Middle, Secondary and Continuing Education

JAMES A. KADAMUS

Coordinator, Facilities, Management and Information Services

CHARLES SZUBERLA

Coordinator, Information, Reporting and Technology Services

MARTHA P. MUSSER

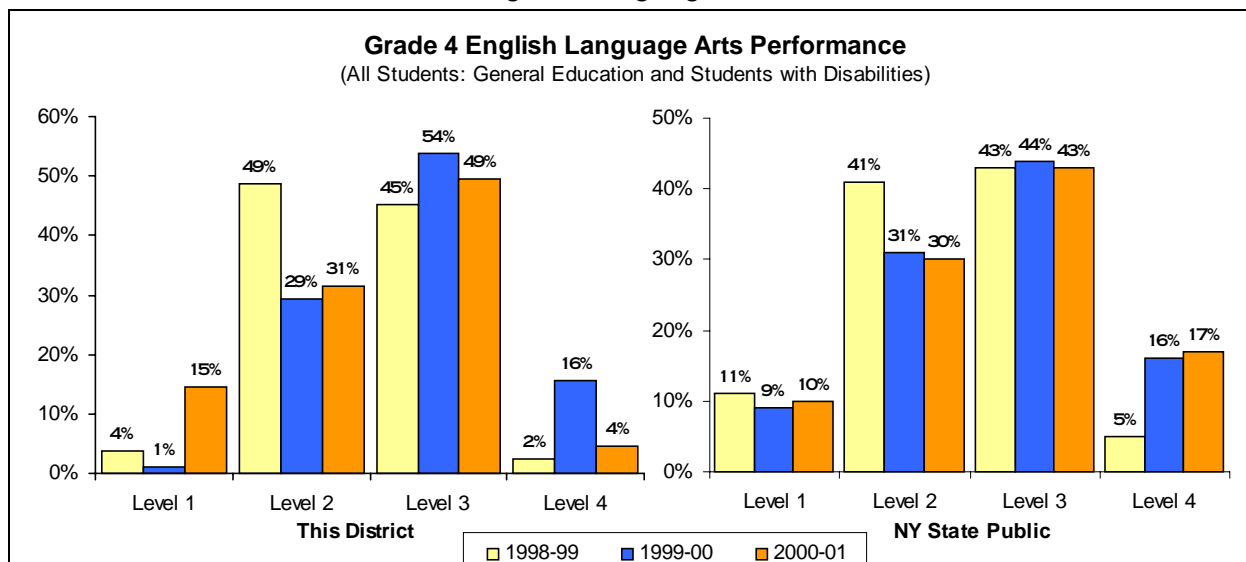
The State Education Department does not discriminate on the basis of age, color, religion, creed, disability, marital status, veteran status, national origin, race, gender, genetic predisposition or carrier status, or sexual orientation in its educational programs, services and activities. Portions of this publication can be made available in a variety of formats, including braille, large print or audio tape, upon request. Inquiries concerning this policy of nondiscrimination should be directed to the Department's Office for Diversity, Ethics, and Access, Room 530, Education Building, Albany, NY 12234. **Requests for additional copies of this publication may be made by contacting the Publications Sales Desk, Room 309, Education Building, Albany, NY 12234.**

Please address all correspondence about this report that is not related to data corrections to:

***School Report Card Coordinator
Information, Reporting, and Technology Services Team
Room 863 Education Building Annex
New York State Education Department
Albany, NY 12234***

e-mail: RPTCARD@mail.nysed.gov

Elementary Level English Language Arts



Performance at This District		Counts of Students							Mean Score	
		Not Tested			Tested					
		AA ¹	ELL ²	Absent ³	Level 1	Level 2	Level 3	Level 4		Total
Jan 1999	General Education		0	1	3	31	34	2	70	647
	Students with Disabilities	5	0	0	0	9	3	0	12	637
	All Students	5	0	1	3	40	37	2	82	646
Jan 2000	General Education		0	2	1	19	44	14	78	665
	Students with Disabilities	3	0	0	0	7	4	0	11	635
	All Students	3	0	2	1	26	48	14	89	661
Jan 2001	General Education		0	2	2	21	35	4	62	651
	Students with Disabilities	0	0	0	11	7	9	0	27	619
	All Students	0	0	2	13	28	44	4	89	641

Grade 4 English Language Arts Levels - Listening, Reading, and Writing Standards

Level 4	These students exceed the standards and are moving toward high performance on the Regents examination. All students scoring from 692 to 800 are in this level.
Level 3	These students meet the standards and, with continued steady growth, should pass the Regents examination. All students scoring from 645 to 691 are in this level.
Level 2	These students need extra help to meet the standards and pass the Regents examination. All students scoring from 603 to 644 are in this level.
Level 1	These students have serious academic deficiencies . All students scoring from 455 to 602 are in this level.

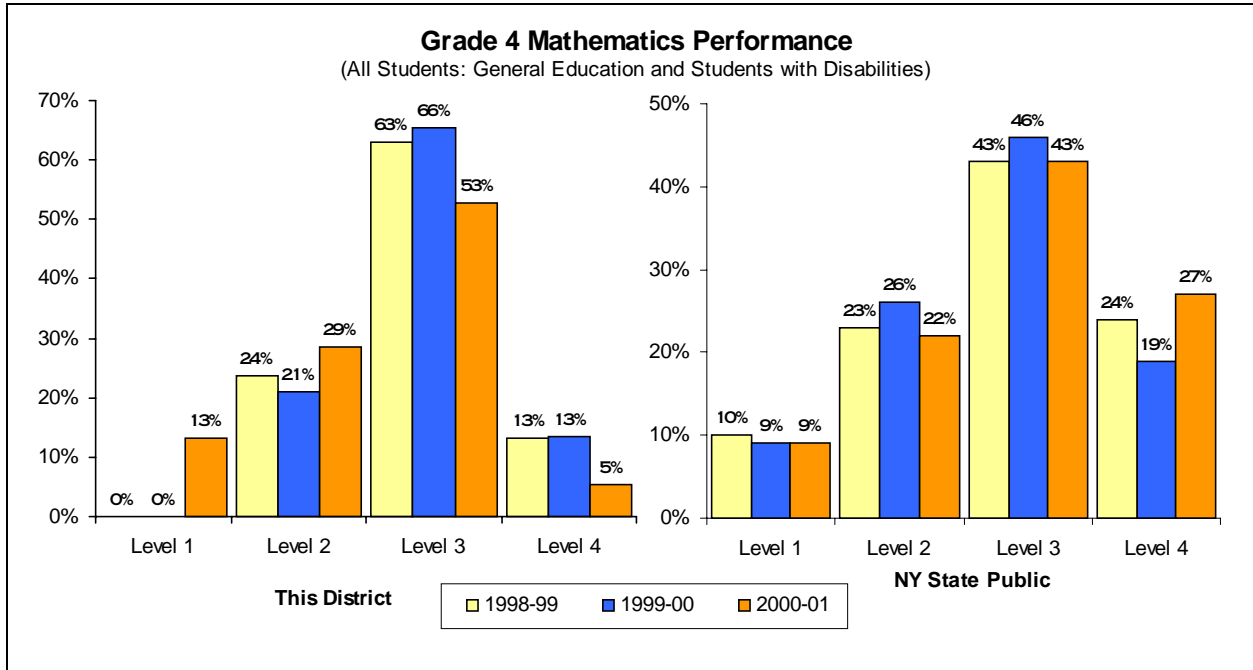
Performance of English Language Learners (ELL)

ELL are students for whom English is a second language. Schools teach these students English so they can participate effectively in the academic program. ELL students without sufficient proficiency in English are not required to take the grade 4 ELA test. Their progress in learning English is measured, using standardized tests, and reported.

Grade 4	English Proficiency Below Effective Participation Level	Making Appropriate Progress
January 2001	0	0

- 1 For 2001, these students were eligible for the Alternate Assessment (AA). For 2000 and 1999, these students were exempt from this test because of disability as stated in their Individualized Educational Program.
 - 2 These students were not required to take the grade 4 ELA test because they were English Language Learners (ELL) who performed below the 30th percentile on another appropriate English reading assessment.
 - 3 These students were enrolled at the time of testing, but were not present to complete some part of the ELA assessment.
- # To protect student confidentiality, the pound character (#) appears when fewer than five students in a group were tested. If fewer than five were tested in one subgroup, then counts appear only in the "All Students" category.

Elementary Level Mathematics



Performance at This District		Counts of Students							Mean Score	
		Not Tested			Tested					
		AA ¹	ELL ²	Absent ³	Level 1	Level 2	Level 3	Level 4		Total
June 1999	General Education		0	0	0	14	47	11	72	655
	Students with Disabilities	5	0	0	0	6	6	0	12	638
	All Students	5	0	0	0	20	53	11	84	652
May 2000	General Education		0	0	0	15	53	11	79	655
	Students with Disabilities	3	0	0	0	4	6	1	11	639
	All Students	3	0	0	0	19	59	12	90	653
May 2001	General Education		0	0	2	18	38	5	63	648
	Students with Disabilities	0	0	0	10	8	10	0	28	617
	All Students	0	0	0	12	26	48	5	91	638

Grade 4 Mathematics Levels - Knowledge, Reasoning, and Problem-Solving Standards	
Level 4	These students exceed the standards and are moving toward high performance on the Regents examination. All students scoring from 678 to 810 are in this level.
Level 3	These students meet the standards and, with continued steady growth, should pass the Regents examination. All students scoring from 637 to 677 are in this level.
Level 2	These students need extra help to meet the standards and pass the Regents examination. All students scoring from 602 to 636 are in this level.
Level 1	These students have serious academic deficiencies . All students scoring from 448 to 601 are in this level.

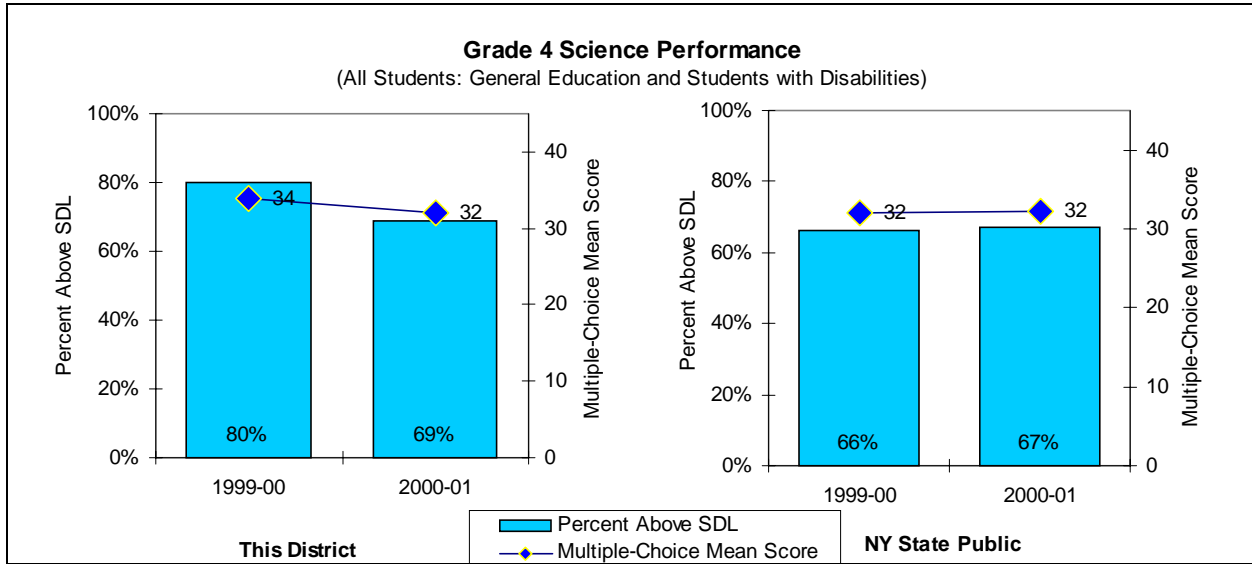
1 For 2001, these students were eligible for the Alternate Assessment (AA). For 2000 and 1999, these students were exempt from this test because of disability as stated in their Individualized Educational Program.

2 These students were not required to take this test because they were English language learners (ELL) who perform below the 30th percentile on an appropriate English reading assessment and there was no test form available in their native language. Other ELL students must take this test, but may take an alternative language form if such is available.

3 These students were enrolled at the time of testing but were not present to complete some part of this mathematics assessment.

To protect student confidentiality, the pound character (#) appears when fewer than five students in a group were tested. If fewer than five were tested in one subgroup, then counts appear only in the "All Students" category.

Elementary Level Science



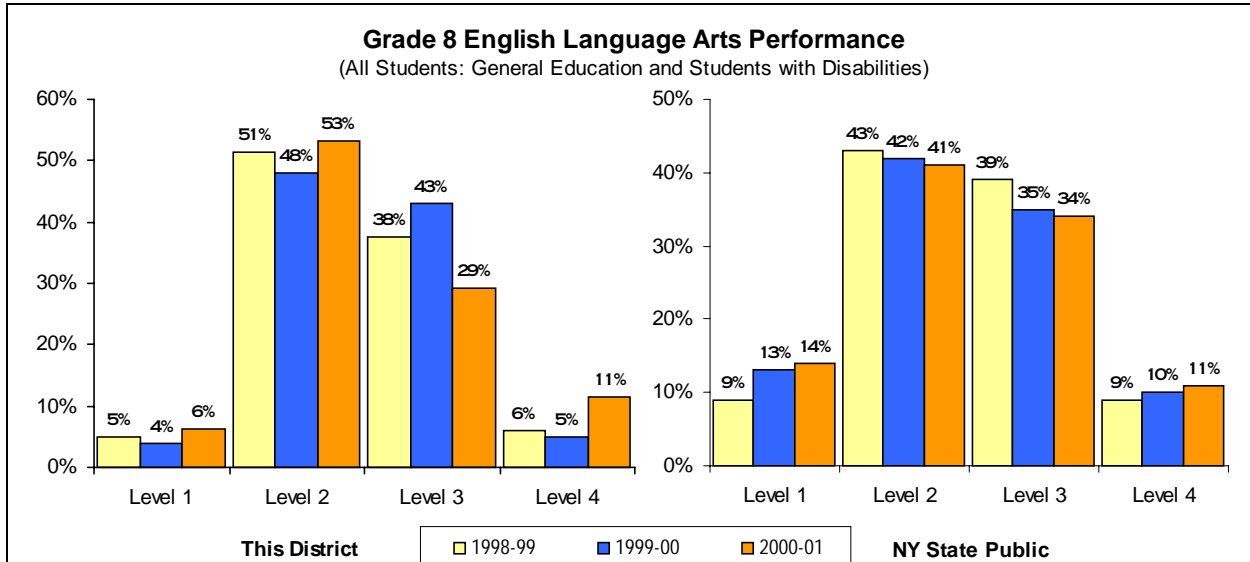
Performance at This District	Counts of Students						School Mean Scores		
	Not Tested			Multiple-Choice Test Component		Performance Component	Mult.-Choice	Performance	
	AA ¹	ELL ²	Absent ³	Tested	Above SDL	Tested			
May 2000	General Education		0	0	79	64	79	35	31
	Students with Disabilities	3	0	0	11	8	11	31	29
	All Students	3	0	0	90	72	90	34	30
May 2001	General Education		0	0	63	51	63	33	27
	Students with Disabilities	0	0	0	27	11	27	27	26
	All Students	0	0	0	90	62	90	32	27

Grade 4 Science - Knowledge, Reasoning, and Problem-Solving Standards

Multiple-Choice Test Component	This component is 45 multiple-choice questions based upon the New York State <i>Elementary Science Syllabus</i> , and referenced to the New York State <i>Learning Standards for Mathematics, Science and Technology</i> (Elementary Level). Of the 45 questions, 17 reference Physical Setting; 17 reference Living Environment; 8 reference Scientific Inquiry; and 3 reference Mathematics.
State Designated Level (SDL)	Students who correctly answer fewer than 30 of the 45 questions of the Multiple-Choice Test Component must receive academic intervention services (AIS) in the following term of instruction.
Performance Component	This component involves performance of hands-on tasks at 5 stations. The stations are named <i>Liquids</i> , <i>Grouping Objects</i> , <i>Ball and Ramp Game</i> , <i>Magnetic and Electrical Testing</i> , and <i>Unknown Object</i> . All tested students work at the <i>Ball and Ramp Game</i> . Approximately half the students work on <i>Liquids</i> and <i>Grouping Objects</i> and the other half work on <i>Magnetic and Electrical Testing</i> and <i>Unknown Object</i> . Schools use a statistically randomized procedure to assign students to these stations.
School Mean Scores	For the multiple-choice test component, this is the average number of correct answers for students tested. If all tested students answered all questions correctly, this score would be 45. For the performance component, the mean scores for the stations are added together to arrive at the school mean score. If all tested students received perfect scores, this score would be 49.

- 1 For 2001, these students were eligible for the Alternate Assessment (AA). For 2000 and 1999, these students were exempt from this test because of disability as stated in their Individualized Educational Program.
 - 2 These students were not required to take this test because they were English language learners (ELL) who perform below the 30th percentile on an appropriate English reading assessment and there was no test form available in their native language. Other ELL students must take this test, but may take an alternative language form if such is available.
 - 3 These students were enrolled at the time of testing but did not complete any part of this science assessment.
- # To protect student confidentiality, the pound character (#) appears when fewer than five students in a group were tested. If fewer than five were tested in one subgroup, then counts appear only in the "All Students" category.

Middle Level English Language Arts



Performance at This District		Counts of Students								Mean Score
		Not Tested			Tested					
		AA ¹	ELL ²	Absent	Level 1	Level 2	Level 3	Level 4	Total	
June 1999	General Education		0	0	0	36	38	6	80	709
	Students with Disabilities	1	0	0	5	16	0	0	21	672
	All Students	1	0	0	5	52	38	6	101	701
May 2000	General Education		0	0	1	39	43	5	88	704
	Students with Disabilities	0	0	2	3	10	1	0	14	679
	All Students	0	0	2	4	49	44	5	102	701
May 2001	General Education		0	0	1	38	26	11	76	705
	Students with Disabilities	0	0	0	5	13	2	0	20	675
	All Students	0	0	0	6	51	28	11	96	699

Grade 8 English Language Arts Levels - Listening, Reading, and Writing Standards

Level 4	These students exceed the standards and are moving toward high performance on the Regents examination. All students scoring from 739 to 830 are in this level.
Level 3	These students meet the standards and, with continued steady growth, should pass the Regents examination. All students scoring from 701 to 738 are in this level.
Level 2	These students need extra help to meet the standards and pass the Regents examination. All students scoring from 662 to 700 are in this level.
Level 1	These students have serious academic deficiencies . All students scoring from 527 to 661 are in this level.

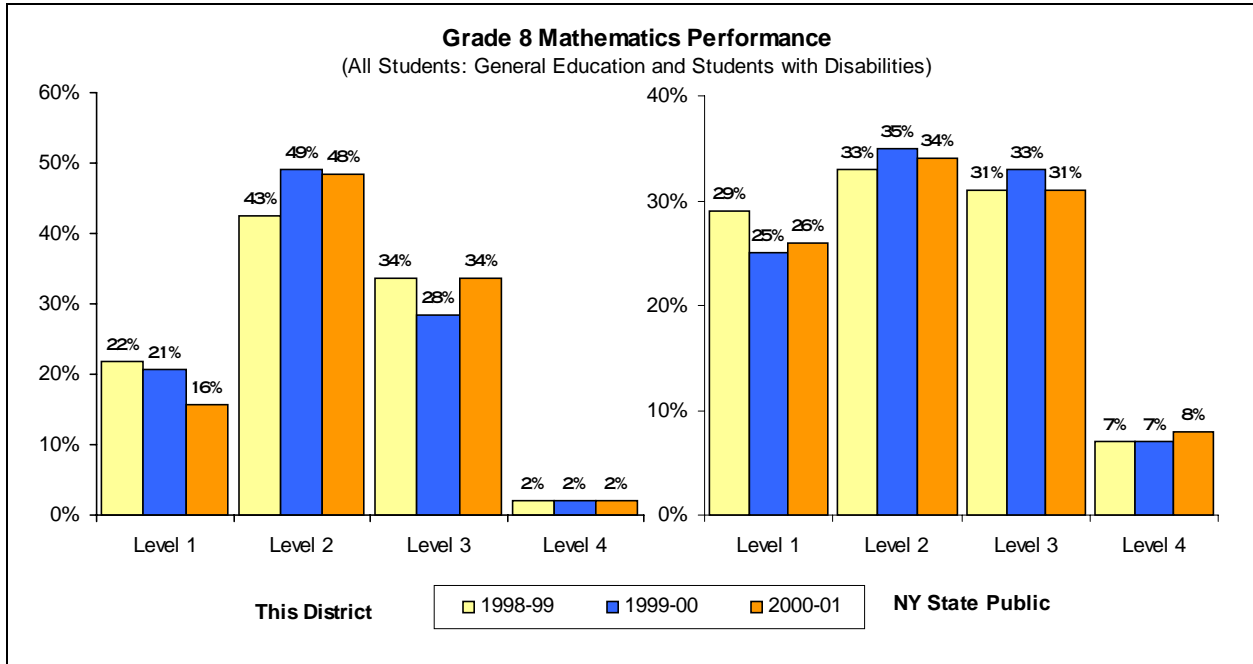
Performance of English Language Learners (ELL)

ELL are students for whom English is a second language. Schools teach these students English so they can participate effectively in the academic program. ELL students without sufficient proficiency in English are not required to take the grade 8 ELA test. Their progress in learning English is measured, using standardized tests, and reported.

Grade 8	English Proficiency Below Effective Participation Level	Making Appropriate Progress
June 2001	0	0

- 1 For 2001, these students were eligible for the Alternate Assessment (AA). For 2000 and 1999, these students were exempt from this test because of disability as stated in their Individualized Educational Program.
 - 2 These students were not required to take the grade 8 ELA test because they were English Language Learners (ELL) who performed below the 30th percentile on another appropriate English reading assessment.
 - 3 These students were enrolled at the time of testing but were not present to complete some part of the ELA assessment.
- # To protect student confidentiality, the pound character (#) appears when fewer than five students in a group were tested. If fewer than five were tested in one subgroup, then counts appear only in the "All Students" category.

Middle Level Mathematics



Performance at This District	Counts of Students								Mean Score	
	Not Tested			Tested						
	AA ¹	ELL ²	Absent ³	Level 1	Level 2	Level 3	Level 4	Total		
June 1999	General Education		0	0	11	36	31	2	80	710
	Students with Disabilities	1	0	0	11	7	3	0	21	680
	All Students	1	0	0	22	43	34	2	101	704
May 2000	General Education		0	0	14	45	27	2	88	706
	Students with Disabilities	0	0	2	7	5	2	0	14	676
	All Students	0	0	2	21	50	29	2	102	702
May 2001	General Education		0	1	9	35	29	2	75	711
	Students with Disabilities	0	0	0	6	11	3	0	20	692
	All Students	0	0	1	15	46	32	2	95	707

Grade 8 Mathematics Levels - Knowledge, Reasoning, and Problem-Solving Standards

Level 4	These students exceed the standards and are moving toward high performance on the Regents examination. All students scoring from 760 to 882 are in this level.
Level 3	These students meet the standards and, with continued steady growth, should pass the Regents examination. All students scoring from 716 to 759 are in this level.
Level 2	These students need extra help to meet the standards and pass the Regents examination. All students scoring from 681 to 715 are in this level.
Level 1	These students have serious academic deficiencies . All students scoring from 517 to 680 are in this level.

* Similar Schools are schools grouped by district and student demographic characteristics. More information is on the **School Profile** page of this report. Further explanation is available at <http://www.emsc.nysed.gov/reprcd2002/similar.html>

1 For 2001, these students were eligible for the Alternate Assessment (AA). For 2000 and 1999, these students were exempt from this test because of disability as stated in their Individualized Educational Program.

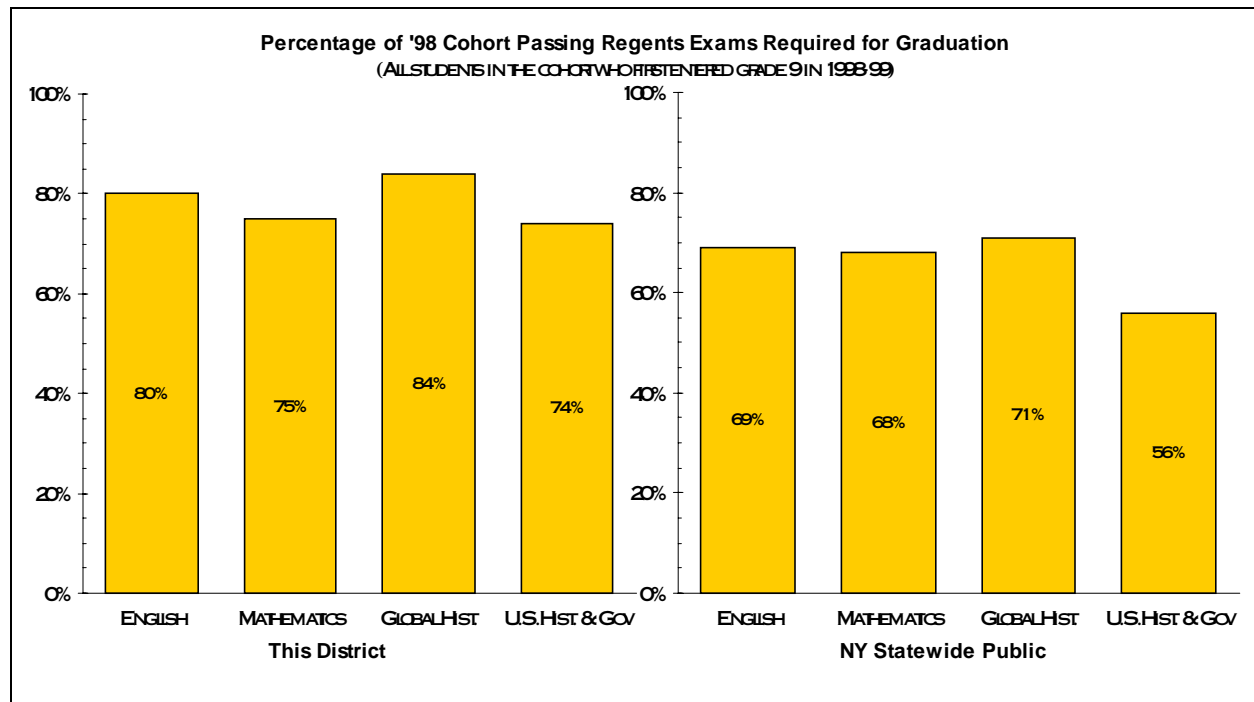
2 These students are not required to take this test because they are English language learners (ELL) who perform below the 30th percentile on an appropriate English reading assessment and there is no test form available in their native language. Other ELL students must take this test, but may take an alternative language form if such is available.

3 These students were enrolled at the time of testing but were not present to complete some part of the mathematics assessment.

To protect student confidentiality, the pound character (#) appears when fewer than five students in a group were tested. If fewer than five were tested in one subgroup, then counts appear only in the "All Students" category.

High School Achievement - After Three Years of Instruction

This section presents the success of students on Regents examinations required for graduation. Passing is defined as scoring 65 or higher, or earning approved alternative credit. Students who earn credit through component retesting are counted as if they scored in range 55 to 64 or in range 65 to 84 as determined by the results of the component retest. This page presents information about students who first entered grade 9 in 1998-99, displaying results for these students after three years. Safety-net provisions of the graduation requirements allow some students to earn credit for graduation by alternative means. The percentage of students meeting their personal graduation requirements after four years is presented elsewhere in this report as a school accountability measure.



Requirement	Student Category	Students in Cohort ¹	Highest Score ² From 55 To 64	Highest Score ² From 65 To 84	Highest Score ² From 85 To 100	Approved Alternative Credit
English (after 3 years)	General Education	92	7	57	24	0
	Students w/ Disabilities	16	4	5	0	0
	All Students	108	11	62	24	0
Mathematics (after 3 years)	General Education	92	10	23	54	0
	Students w/ Disabilities	16	0	2	2	0
	All Students	108	10	25	56	0
Global History (after 3 years)	General Education	92	6	59	26	0
	Students w/ Disabilities	16	6	6	0	0
	All Students	108	12	65	26	0
U.S. Hist. & Gov. (after 3 years)	General Education	92	8	43	32	0
	Students w/ Disabilities	16	3	5	0	0
	All Students	108	11	48	32	0

¹ Cohort is defined in Section 100.2 (p) (8) (iii) of Commissioner's Regulations.

² Only the highest score of each student is counted, regardless of how many times the student may have taken the examination.

To protect student confidentiality, the pound character (#) appears when there are fewer than five students in a group. If fewer than five special-education students were reported, then counts appear only in the "All Students" category.

School District Profile

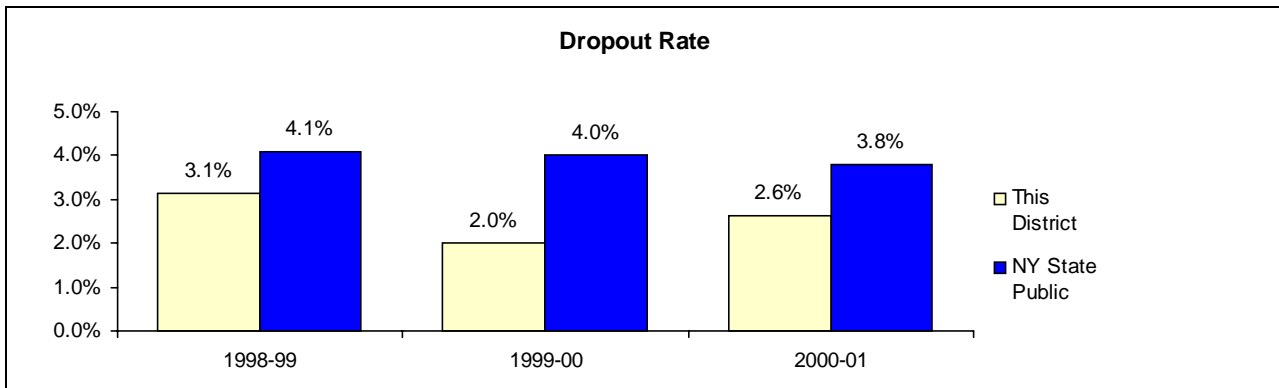
Superintendent: Dr. George F. Mack		Phone: (607)865-4116		
Organization 2000-01		School District Staff ¹ (both full- and part-time)		
Grade Range	Student Enrollment	Count of Teachers	Count of Other Professionals	Count of Paraprofessionals
K-12	1,190	106	13	37

1999-00 School District Total Expenditure per Pupil	\$9,946
1999-00 NY State Public Schools Total Expenditure per Pupil	\$11,040

Student Enrollment			
Grade Level	October 2000	Grade Level	October 2000
Pre-Kindergarten	0	Grade 7	76
Kindergarten	92	Grade 8	100
Grade 1	95	Grade 9	99
Grade 2	69	Grade 10	104
Grade 3	78	Grade 11	112
Grade 4	88	Grade 12	102
Grade 5	91	Ungraded Elementary with Disabilities	0
Grade 6	84	Ungraded Secondary with Disabilities	0

Student Demographics	1998-99		1999-2000		2000-01	
	Count	Percent	Count	Percent	Count	Percent
English Language Learners	0	0.0%	0	0.0%	0	0.0%
Eligible For Free Lunch	362	28.2%	254	20.9%	237	19.9%

Need to Resource Capacity (N/RC) Group	The State Education Department assigns each school district to a comparison group based on student demographics and the resource capacity of the district. This district is in N/RC Group 4. This district is a rural district with high needs relative to local resource capacity.
---	---



A dropout is any student who left school prior to graduation for any reason except death and did not enter another school or approved high school equivalency preparation program. The dropout rate is calculated by dividing the total number of students who dropped out in a given year by the total fall enrollment in grades 9-12, including that portion of the ungraded secondary student enrollment that can be attributed to grades 9-12.

¹ Some district-employed staff serve in more than one school. These shared people are included in counts reported here.