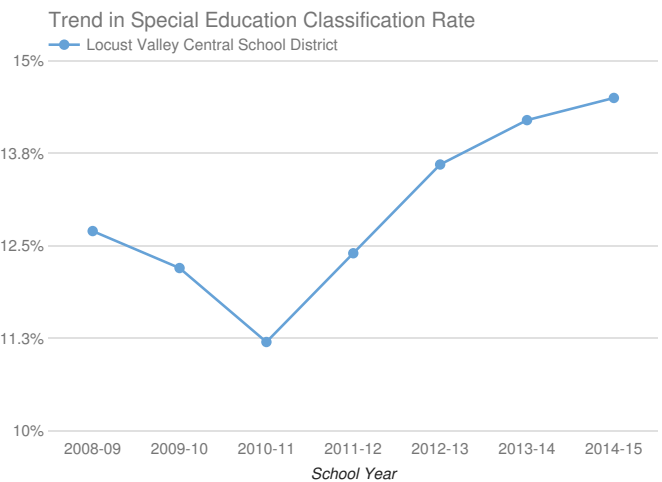
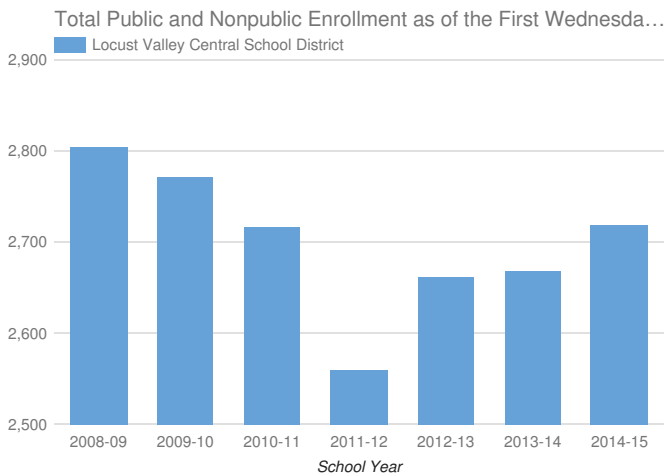


- Enrollment & Classification Rate
- Indicator 1: Graduation Rate
- Indicator 2: Drop-Out Rate
- Indicator 3: State Assessments
- Indicator 4A: Suspension Rate
- Indicator 4B: Significant Discrepancy by Race/Ethnicity in Suspension Rate
- Indicator 5: School-Age Least Restrictive Environment (LRE)
- Indicator 6: Preschool Least Restrictive Environment (LRE)
- Indicator 7: Preschool Outcomes
- Indicator 8: Parental Involvement
- Indicator 9: Disproportionality - Identification for Special Education
- Indicator 10A: Disproportionality in Specific Disability Categories
- Indicator 10B: Disproportionality in Special Education Placements
- Indicator 11: Timely Evaluations (Child Find)
- Indicator 12: Early Childhood Transition
- Indicator 13: Secondary Transition
- Indicator 14: Post-School Outcomes

Locust Valley Central School District 2014-15

Enrollment And Classification Rate



District Enrollment: **2,718**

SCHOOL-AGE STUDENTS WITH DISABILITIES AND CLASSIFICATION RATE

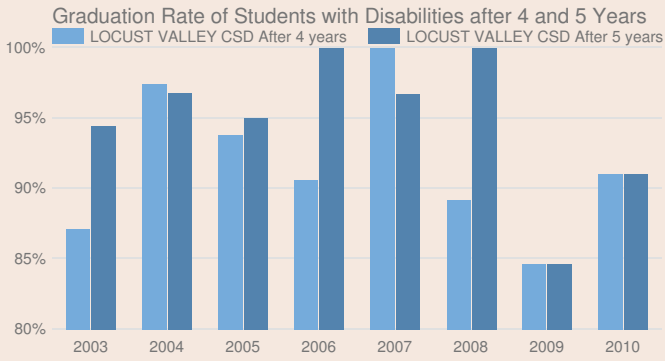
394

14.5%

PRESCHOOL STUDENTS WITH DISABILITIES

34

Indicator 1: Graduation Rate of Students with Disabilities



2010 TOTAL COHORT - AUGUST 2014

Students with Disabilities and Graduation rate

33

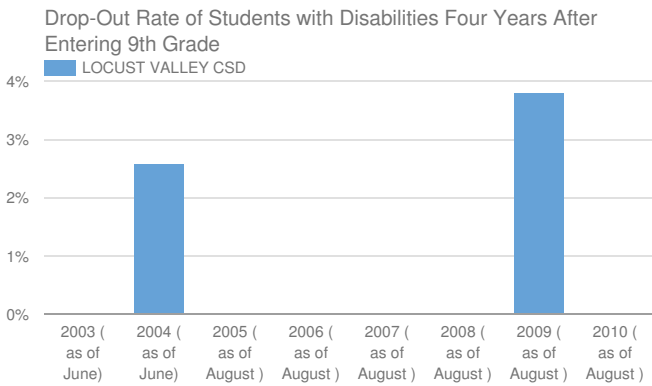
91%

State target and does district meet target

50.48% or higher

Yes, met state target

Indicator 2: Drop-Out Rate of Students with Disabilities



2010 TOTAL COHORT 4 YEARS LATER - AUGUST 2014

Students with Disabilities and Drop-out Rate

33

0%

State target and does district meet target

14% or lower

Yes, met state target

* Districts are only held accountable for the performance of students when there are at least 30 students in the total cohort.

Indicator 3: State Assessments

Participation in and Performance on State Assessments

GRADE 3-8 ELA

Students with disabilities and participation rate

332

63%

State target and does district meet target

95%

No, did not meet state target

GRADE 3-8 MATH

Students with disabilities and participation rate

333

59%

State target and does district meet target

95%

No, did not meet state target

HIGH SCHOOL ELA

Students with disabilities and participation rate

-

-

State target and does district meet target

95%

-

HIGH SCHOOL MATH

Students with disabilities and participation rate

-

-

State target and does district meet target

95%

-

Performance on State Assessments and Adequate Yearly Progress (AYP)

GRADE 3-8 ELA

Percent at or above level 3

85

27%

State target and does district meet target

Make AYP

No, did not meet state target

GRADE 3-8 MATH

Percent at or above level 3

83

47%

State target and does district meet target

0

No, did not meet state target

HIGH SCHOOL ELA

Percent at or above level 3

-

-

State target and does district meet target

Make AYP

-

Percent at or above level 3

-

-

State target and does district meet target

Make AYP

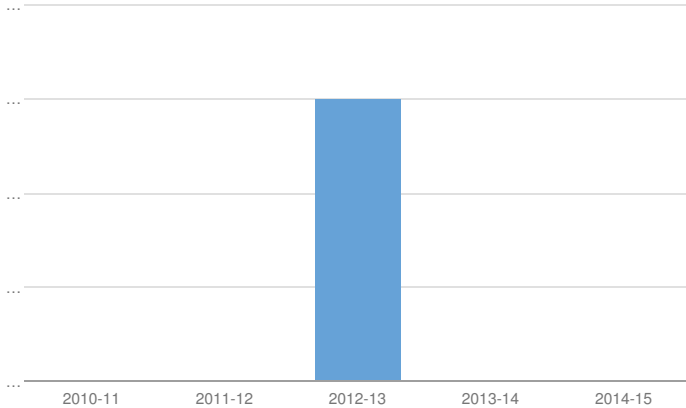
-

Participation in and performance on rate is suppressed if less than 40 students with disabilities are reported as enrolled for participation rate.

Indicator 4A: Suspension Rate

Suspension Rate of Students with Disabilities after 4 and 5 Years

■ Locust Valley Central School District



Students with Disabilities 394

SUSPENSION RATE 2014-15

Students with Disabilities Suspended Out-of-School for More than 10 Days and %

0

0%

State target and does district meet target

2.7% or lower

Yes, met state target

Indicator 4B: Significant Discrepancy by Race/Ethnicity in Suspension Rate

SUSPENSION RATE 2014-15

Did the school district have significant discrepancy?

No

State target for 2014-15

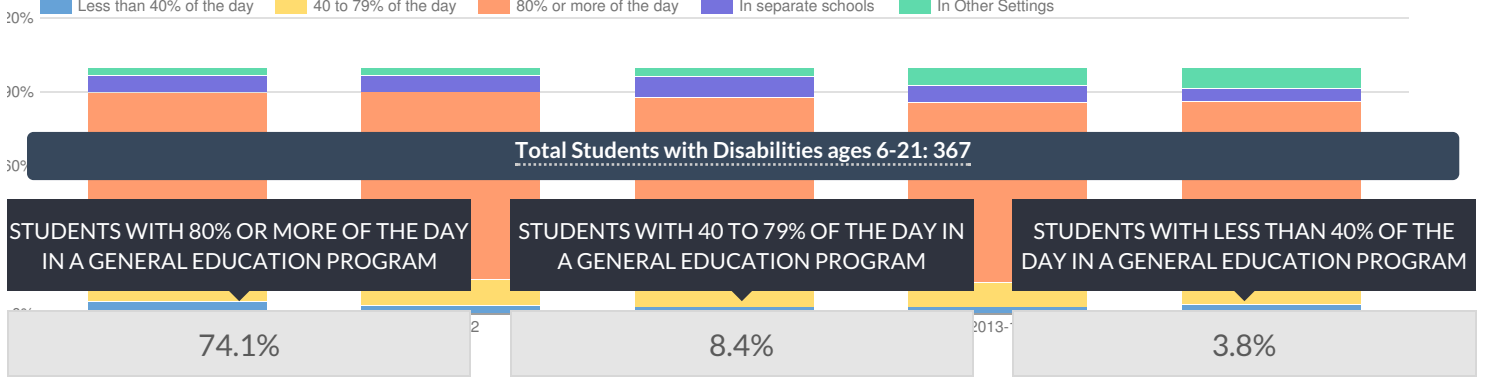
State target and does district meet target

No school districts will have disproportionality that is the result of inappropriate policies, practices and procedures.

Yes, met state target

Indicator 5: School-age Least Restrictive Environment (LRE)

Locust Valley Central School District % of Students with Disabilities (Ages 6-21) in Least Restrictive Environment



State target and does district meet target

More than 60%	Yes, met state target
---------------	-----------------------

State target and does district meet target

No State Target	Not Applicable
-----------------	----------------

State target and does district meet target

Less than 22%	Yes, met state target
---------------	-----------------------

STUDENTS WITH DISABILITIES IN SEPARATE SETTINGS

5.4%

State target and does district meet target

Less than 5.8%	Yes, met state target
----------------	-----------------------

STUDENTS WITH DISABILITIES IN OTHER SETTINGS

8.2%

State target and does district meet target

No State Target	Not Applicable
-----------------	----------------

Indicator 6: Preschool Least Restrictive Environment (LRE)

Total Students with Disabilities: 61

STUDENTS WITH DISABILITIES WITH MEASUREMENT A

8%

State target and does district meet target

42.7% or higher	No, did not meet state target
-----------------	-------------------------------

STUDENTS WITH DISABILITIES WITH MEASUREMENT B

34%

State target and does district meet target

26.3% or lower	No, did not meet state target
----------------	-------------------------------

Indicator 7: Preschool Outcomes

Preschool Students with Disabilities 6

% OF CHILDREN WITH INCREASED RATE OF GROWTH WITH POSITIVE SOCIAL - EMOTIONAL SKILLS

100%

State target and does district meet target

% OF CHILDREN FUNCTIONING WITHIN EXPECTATIONS WITH POSITIVE SOCIAL - EMOTIONAL SKILLS

50%

State target and does district meet target

85.5% Yes, met state target

55.7% No, did not meet state target

% OF CHILDREN WITH INCREASED RATE OF GROWTH WITH ACQUISITION AND USE OF KNOWLEDGE & SKILLS

% OF CHILDREN FUNCTIONING WITHIN EXPECTATIONS WITH ACQUISITION AND USE OF KNOWLEDGE & SKILLS

100%

50%

State target and does district meet target

State target and does district meet target

87% Yes, met state target

55.6% No, did not meet state target

% OF CHILDREN WITH INCREASED RATE OF GROWTH WITH USE OF APPROPRIATE BEHAVIORS TO MEET THEIR NEEDS

% OF CHILDREN FUNCTIONING WITHIN EXPECTATIONS WITH USE OF APPROPRIATE BEHAVIORS TO MEET THEIR NEEDS

100%

33.3%

State target and does district meet target

State target and does district meet target

84.5% Yes, met state target

63.5% No, did not meet state target

Indicator 8: Parental Involvement

This district is not required to report for indicator 8 for 2014-15 please see <http://www.p12.nysed.gov/sedcar/data.htm#subschedule> for the school year in which this school district will report data for this indicator.

Indicator 9: Disproportionality - Identification for Special Education

DISPROPORTIONATE REPRESENTATION IN SPECIAL EDUCATION?

No

State target and does district meet target

No school districts will have disproportionality that is the result of inappropriate policies, practices and procedures.

Yes, met state target

Indicator 10A: Disproportionality in Specific Disability Categories

DISPROPORTIONATE REPRESENTATION IN SPECIFIC DISABILITY CATEGORIES?

No

State target and does district meet target

No school districts will have disproportionality that is the result of inappropriate policies, practices and procedures.

Yes, met state target

Indicator 10B: Disproportionality in Special Education Placements

DISPROPORTIONATE REPRESENTATION IN PARTICULAR SETTINGS?

No

State target and does district meet target

No school districts will have disproportionality that is the result of inappropriate policies, practices and procedures.

Yes, met state target

Indicator 11: Timely Evaluations (Child Find)

This district is not required to report for indicator 11 for 2014-15 please see <http://www.p12.nysed.gov/sedcar/data.htm#subschedule> for the school year in which this school district will report data for this indicator.

Indicator 12: Early Childhood Transition

Percent of children with IEPs who transitioned from early intervention services (Part C) to preschool special education services (Part B) and received their preschool special education services by their third birthdays consistent with State law.

This district is not required to report for Indicator 12 for 2014-15 please see <http://www.p12.nysed.gov/sedcar/data.htm#subschedule> for the school year in which this school district will report data for this indicator.

Indicator 13: Secondary Transition

This district is not required to report for Indicator 13 for 2014-15 please see <http://www.p12.nysed.gov/sedcar/data.htm#subschedule> for the school year in which this school district will report data for this indicator.

Indicator 14: Post-School Outcomes

This district is not required to report for Indicator 14 for 2014-15 please see <http://www.p12.nysed.gov/sedcar/data.htm#subschedule> for the school year in which this school district will report data for this indicator.

© COPYRIGHT NEW YORK STATE EDUCATION DEPARTMENT, ALL RIGHTS RESERVED.

THIS DOCUMENT WAS CREATED ON: OCTOBER 22, 2019, 5:32 AM EST