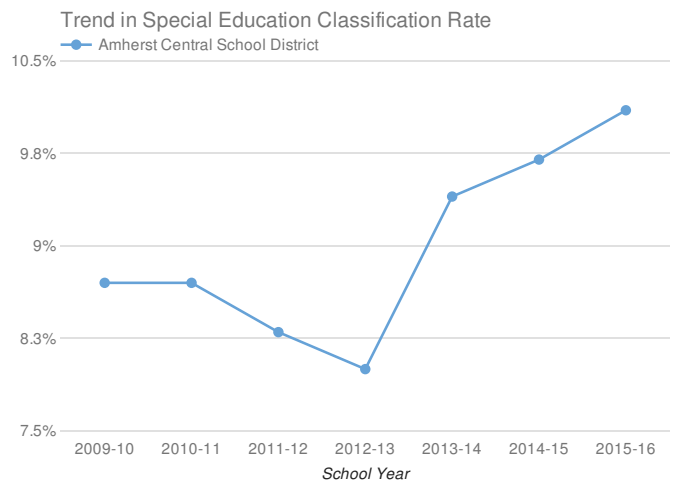
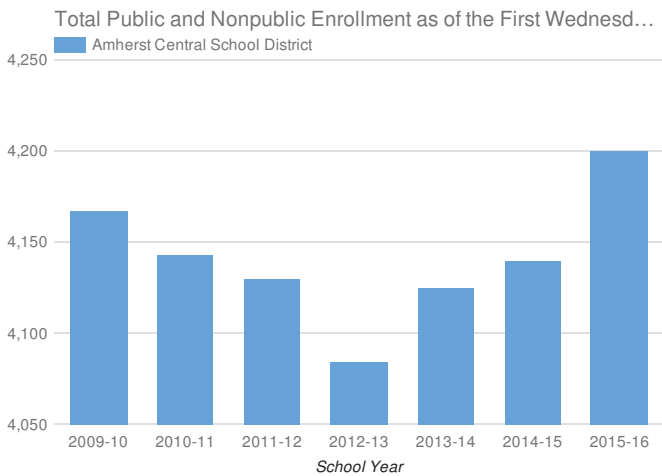


- Enrollment & Classification Rate
- Indicator 1: Graduation Rate
- Indicator 2: Drop-Out Rate
- Indicator 3: State Assessments
- Indicator 4A: Suspension Rate
- Indicator 4B: Significant Discrepancy by Race/Ethnicity in Suspension Rate
- Indicator 5: School-Age Least Restrictive Environment (LRE)
- Indicator 6: Preschool Least Restrictive Environment (LRE)
- Indicator 7: Preschool Outcomes
- Indicator 8: Parental Involvement
- Indicator 9: Disproportionality - Identification for Special Education
- Indicator 10A: Disproportionality in Specific Disability Categories
- Indicator 10B: Disproportionality in Special Education Placements
- Indicator 11: Timely Evaluations (Child Find)
- Indicator 12: Early Childhood Transition
- Indicator 13: Secondary Transition
- Indicator 14: Post-School Outcomes

Amherst Central School District 2015-16

Enrollment And Classification Rate



District Enrollment: **4,200**

SCHOOL-AGE STUDENTS WITH DISABILITIES AND CLASSIFICATION RATE

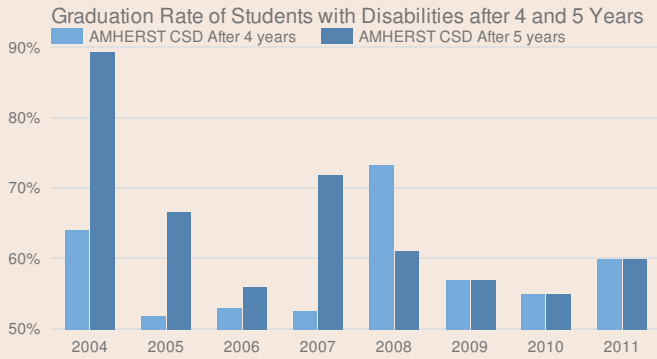
424

10.1%

PRESCHOOL STUDENTS WITH DISABILITIES

46

Indicator 1: Graduation Rate of Students with Disabilities



2011 TOTAL COHORT - AUGUST 2015

Students with Disabilities and Graduation rate

10

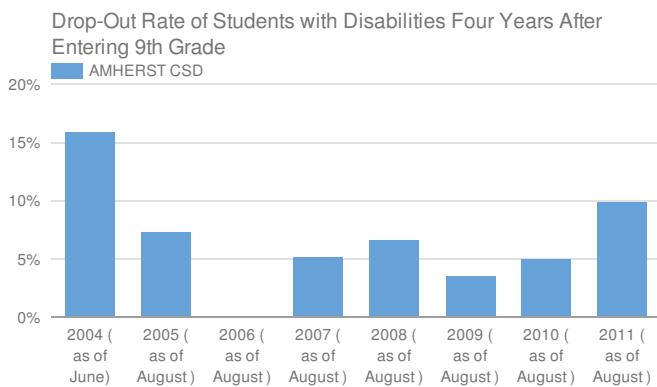
60%

State target and does district meet target

55.39% or higher

Yes, met state target

Indicator 2: Drop-Out Rate of Students with Disabilities



2011 TOTAL COHORT 4 YEARS LATER - AUGUST 2015

Students with Disabilities and Drop-out Rate

10

10%

State target and does district meet target

14% or lower

Yes, met state target

Indicator 3: State Assessments

Participation in and Performance on State Assessments

GRADE 3-8 ELA

Students with disabilities and participation rate

410

64%

State target and does district meet target

95%

No, did not meet state target

GRADE 3-8 MATH

Students with disabilities and participation rate

412

58%

State target and does district meet target

95%

No, did not meet state target

HIGH SCHOOL ELA

Students with disabilities and participation rate

Less Than 40*

-

State target and does district meet target

95%

-

HIGH SCHOOL MATH

Students with disabilities and participation rate

Less Than 40*

-

State target and does district meet target

95%

-

Performance on State Assessments

GRADE 3-8 ELA

Percent at or above level 3

128

20.9%

State target and does district meet target

16%

Yes, met state target

GRADE 3-8 MATH

Percent at or above level 3

121

24.8%

State target and does district meet target

16%

Yes, met state target

HIGH SCHOOL ELA

Percent at or above level 3

36

87.9%

State target and does district meet target

63%

Yes, met state target

HIGH SCHOOL MATH

Percent at or above level 3

36

85.3%

State target and does district meet target

64.5%

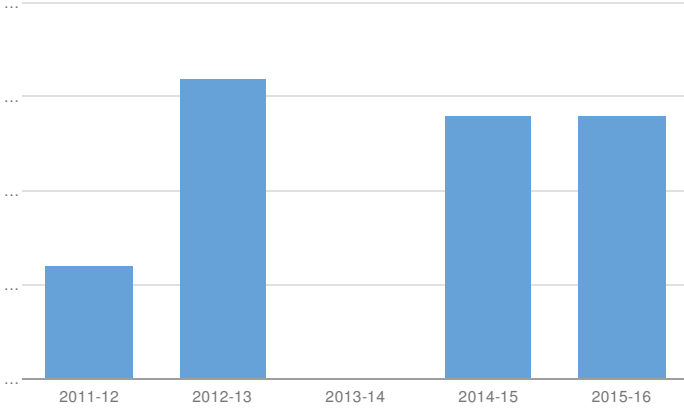
Yes, met state target

Participation in and performance on rate is suppressed if less than 40 students with disabilities are reported as enrolled for participation rate.

Indicator 4A: Suspension Rate

Suspension Rate of Students with Disabilities after 4 and 5 Years

Amherst Central School District



Students with Disabilities 401

SUSPENSION RATE 2015-16

Students with Disabilities Suspended Out-of-School for More than 10 Days and %

3

0.7%

State target and does district meet target

2.7% or lower

Yes, met state target

Indicator 4B: Significant Discrepancy by Race/Ethnicity in Suspension Rate

SUSPENSION RATE 2015-16

Did the school district have significant discrepancy?

NO

State target for 2015-16

State target and does district meet target

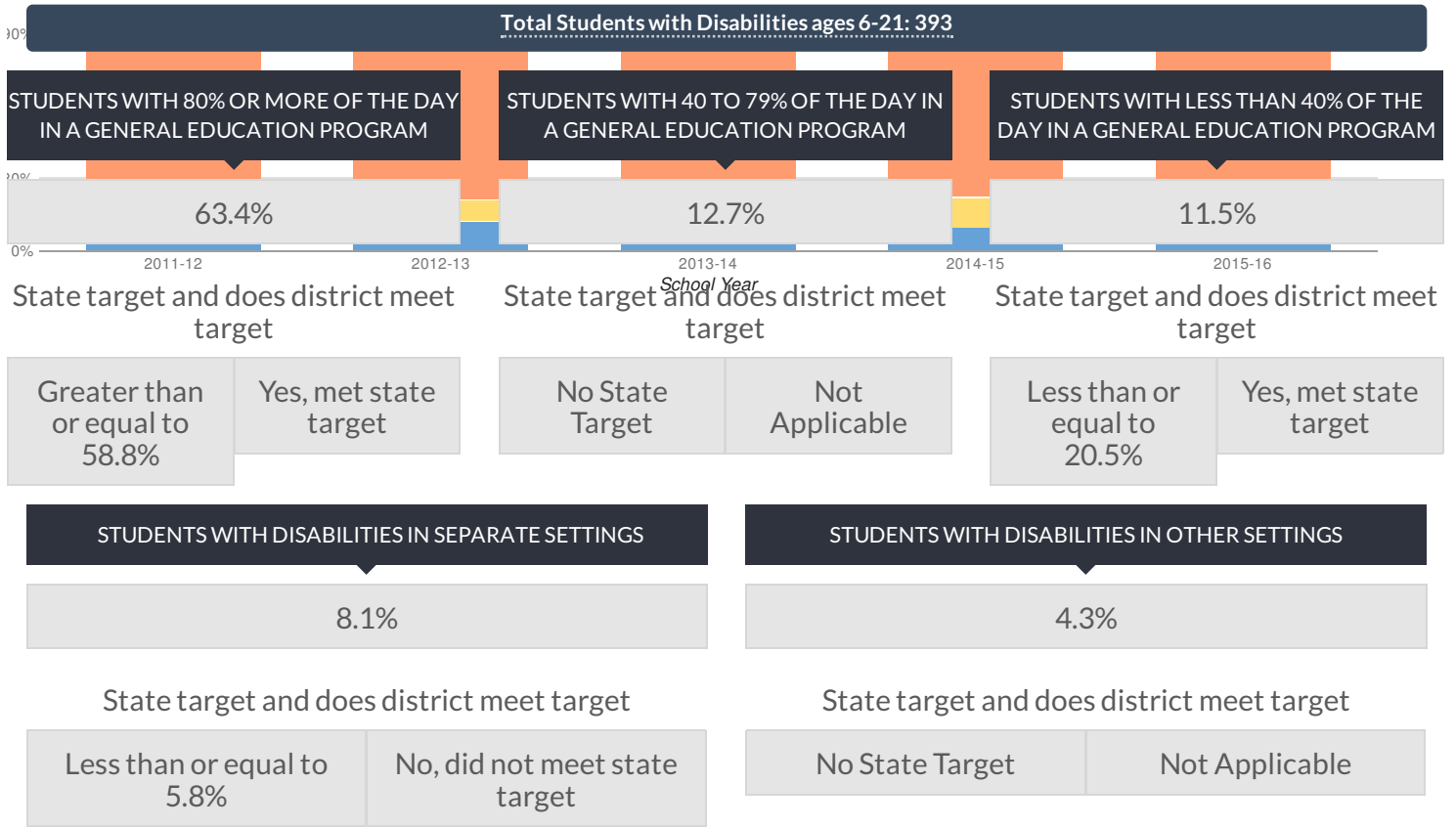
No school districts will have disproportionality that is the result of inappropriate policies, practices and procedures.

Yes, met state target

Indicator 5: School-age Least Restrictive Environment (LRE)

Amherst Central School District % of Students with Disabilities (Ages 6-21) in Least Restrictive Environment

Legend: Less than 40% of the day (Blue), 40 to 79% of the day (Yellow), 80% or more of the day (Orange), In separate schools (Purple), In Other Settings (Green)



Indicator 6: Preschool Least Restrictive Environment (LRE)

Total Students with Disabilities: 77

STUDENTS WITH DISABILITIES WITH MEASUREMENT A

39%

State target and does district meet target

43.5% or higher

No, did not meet state target

STUDENTS WITH DISABILITIES WITH MEASUREMENT B

22.1%

State target and does district meet target

21.0% or lower

No, did not meet state target

Indicator 7: Preschool Outcomes

This district is not required to report for Indicator 7 for 2015-16 please see <http://www.p12.nysed.gov/sedcar/data.htm#subschedule> for the school year in which this school district will report data for this indicator.

Indicator 8: Parental Involvement

This district is not required to report for indicator 8 for 2015-16 please see <http://www.p12.nysed.gov/sedcar/data.htm#subschedule> for the school year in which this school district will report data for this indicator.

Indicator 9: Disproportionality - Identification for Special Education

DISPROPORTIONATE REPRESENTATION IN SPECIAL EDUCATION?

No

State target and does district meet target

No school districts will have disproportionality that is the result of inappropriate policies, practices and procedures.

Yes, met state target

Indicator 10A: Disproportionality in Specific Disability Categories

DISPROPORTIONATE REPRESENTATION IN SPECIFIC DISABILITY CATEGORIES?

No

State target and does district meet target

No school districts will have disproportionality that is the result of inappropriate policies, practices and procedures.

Yes, met state target

Indicator 10B: Disproportionality in Special Education Placements

DISPROPORTIONATE REPRESENTATION IN PARTICULAR SETTINGS?

No

State target and does district meet target

No school districts will have disproportionality that is the result of inappropriate policies, practices and procedures.

Yes, met state target

Indicator 11: Timely Evaluations (Child Find)

NUMBER OF PRESCHOOL STUDENTS FOR WHOM PARENTAL CONSENT TO EVALUATE WAS RECEIVED (JULY 1, 2015 TO JUNE 30, 2016)

62

NUMBER OF PRESCHOOL STUDENTS WHOSE EVALUATIONS WERE COMPLETED WITHIN THE STATE ESTABLISHED TIMELINE

60

NUMBER OF PRESCHOOL STUDENTS WHOSE EVALUATIONS WERE NOT COMPLETED WITHIN STATE ESTABLISHED TIME LINES, BUT FOR REASONS THAT ARE CONSIDERED TO BE IN COMPLIANCE WITH STATE REQUIREMENTS

2

COMPLIANCE RATE - [LINE 2 DIVIDED BY (LINE 1 MINUS LINE 3)*100]

100%

State target and does district meet target

100%

Yes, met state target

NUMBER OF SCHOOL-AGE STUDENTS FOR WHOM PARENTAL CONSENT TO EVALUATE WAS RECEIVED (JULY 1, 2015 TO JUNE 30, 2016)

55

NUMBER OF SCHOOL-AGE STUDENTS WHOSE EVALUATIONS WERE COMPLETED WITHIN THE STATE ESTABLISHED TIMELINE

53

NUMBER OF SCHOOL-AGE STUDENTS WHOSE EVALUATIONS WERE NOT COMPLETED WITHIN STATE ESTABLISHED TIME LINES, BUT FOR REASONS THAT ARE CONSIDERED TO BE IN COMPLIANCE WITH STATE REQUIREMENTS

2

COMPLIANCE RATE - [LINE 2 DIVIDED BY (LINE 1 MINUS LINE 3)*100]

100%

State target and does district meet target

100%

Yes, met state target

NUMBER OF COMBINED STUDENTS FOR WHOM PARENTAL CONSENT TO EVALUATE WAS RECEIVED (JULY 1, 2015 TO JUNE 30, 2016)

117

NUMBER OF COMBINED STUDENTS WHOSE EVALUATIONS WERE COMPLETED WITHIN THE STATE ESTABLISHED TIMELINE

113

NUMBER OF COMBINED STUDENTS WHOSE EVALUATIONS WERE NOT COMPLETED WITHIN STATE ESTABLISHED TIME LINES, BUT FOR REASONS THAT ARE CONSIDERED TO BE IN COMPLIANCE WITH STATE REQUIREMENTS

4

COMPLIANCE RATE - [LINE 2 DIVIDED BY (LINE 1 MINUS LINE 3)*100]

100%

State target and does district meet target

100%

Yes, met state target

Indicator 12: Early Childhood Transition

Percent of children with IEPs who transitioned from early intervention services (Part C) to preschool special education services (Part B) and received their preschool special education services by their third birthdays consistent with State law.

This district is not required to report for Indicator 12 for 2015-16 please see <http://www.p12.nysed.gov/sedcar/data.htm#subschedule> for the school year in which this school district will report data for this indicator.

Indicator 13: Secondary Transition

This district is not required to report for Indicator 13 for 2015-16 please see <http://www.p12.nysed.gov/sedcar/data.htm#subschedule> for the school year in which this school district will report data for this indicator.

Indicator 14: Post-School Outcomes

This district is not required to report for Indicator 14 for 2015-16 please see <http://www.p12.nysed.gov/sedcar/data.htm#subschedule> for the school year in which this school district will report data for this indicator.