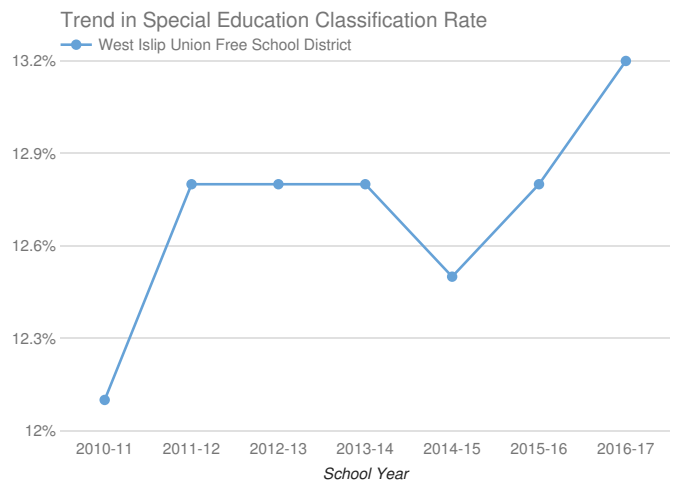
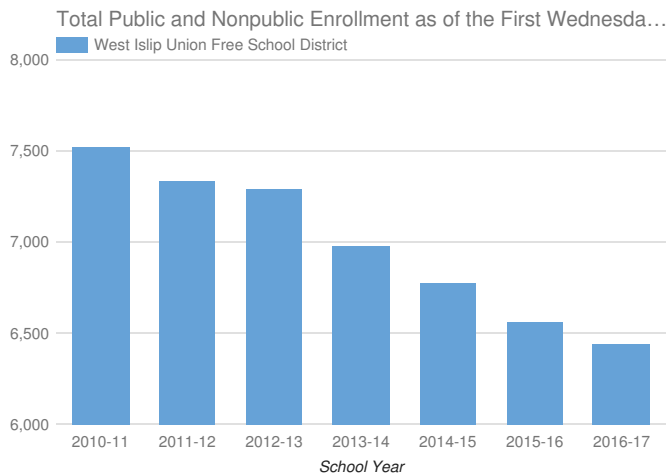


- Enrollment & Classification Rate
- Indicator 1: Graduation Rate
- Indicator 2: Drop-Out Rate
- Indicator 3: State Assessments
- Indicator 4A: Suspension Rate
- Indicator 4B: Significant Discrepancy by Race/Ethnicity in Suspension Rate
- Indicator 5: School-Age Least Restrictive Environment (LRE)
- Indicator 6: Preschool Least Restrictive Environment (LRE)
- Indicator 7: Preschool Outcomes
- Indicator 8: Parental Involvement
- Indicator 9: Disproportionality - Identification for Special Education
- Indicator 10A: Disproportionality in Specific Disability Categories
- Indicator 10B: Disproportionality in Special Education Placements
- Indicator 11: Timely Evaluations (Child Find)
- Indicator 12: Early Childhood Transition
- Indicator 13: Secondary Transition
- Indicator 14: Post-School Outcomes

West Islip Union Free School District 2016-17

Enrollment And Classification Rate



District Enrollment: **6,446**

SCHOOL-AGE STUDENTS WITH DISABILITIES AND CLASSIFICATION RATE

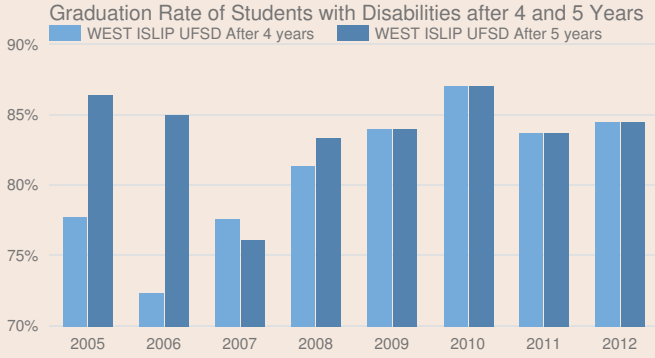
850

13.2%

PRESCHOOL STUDENTS WITH DISABILITIES

63

Indicator 1: Graduation Rate of Students with Disabilities



* Districts are only reported as not meeting this state target when there are at least 30 students with disabilities.

2012 TOTAL COHORT - AUGUST 2016

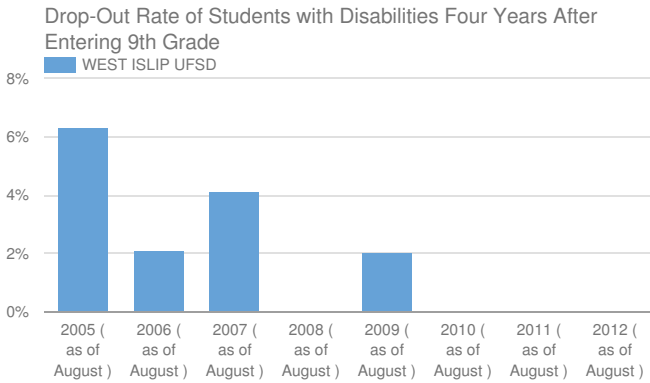
Students with Disabilities and Graduation rate

58	84.5%
----	-------

State target and does district meet target

55.57% or higher	Yes, met state target
------------------	-----------------------

Indicator 2: Drop-Out Rate of Students with Disabilities



2012 TOTAL COHORT 4 YEARS LATER - AUGUST 2016

Students with Disabilities and Drop-out Rate

58	0%
----	----

State target and does district meet target

14% or lower	Yes, met state target
--------------	-----------------------

Indicator 3: State Assessments

Participation in and Performance on State Assessments

GRADE 3-8 ELA

Students with disabilities and participation rate

332	22%
-----	-----

State target and does district meet target

95%	No, did not meet state target
-----	-------------------------------

GRADE 3-8 MATH

Students with disabilities and participation rate

332	21%
-----	-----

State target and does district meet target

95%

No, did not meet state target

HIGH SCHOOL ELA

Students with disabilities and participation rate

74

99%

State target and does district meet target

95%

Yes, met state target

HIGH SCHOOL MATH

Students with disabilities and participation rate

74

100%

State target and does district meet target

95%

Yes, met state target

Performance on State Assessments

GRADE 3-8 ELA

Percent at or above level 3

72

27.8%

State target and does district meet target

20%

Yes, met state target

GRADE 3-8 MATH

Percent at or above level 3

71

31%

State target and does district meet target

19%

Yes, met state target

HIGH SCHOOL ELA

Percent at or above level 3

73

87.7%

State target and does district meet target

63.5%

Yes, met state target

HIGH SCHOOL MATH

Percent at or above level 3

74

91.9%

State target and does district meet target

65%

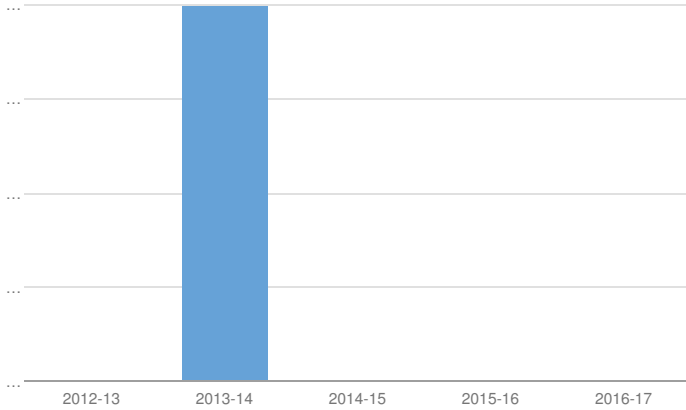
Yes, met state target

Participation in and performance on rate is suppressed if less than 40 students with disabilities are reported as enrolled for participation rate.

Indicator 4A: Suspension Rate

Suspension Rate of Students with Disabilities after 4 and 5 Years

West Islip Union Free School District



Students with Disabilities 843

SUSPENSION RATE 2016-17

Students with Disabilities Suspended Out-of-School for More than 10 Days and %

0

0%

State target and does district meet target

2.7% or lower

Yes, met state target

Indicator 4B: Significant Discrepancy by Race/Ethnicity in Suspension Rate

SUSPENSION RATE 2016-17

Did the school district have significant discrepancy?

NO

State target for 2016-17

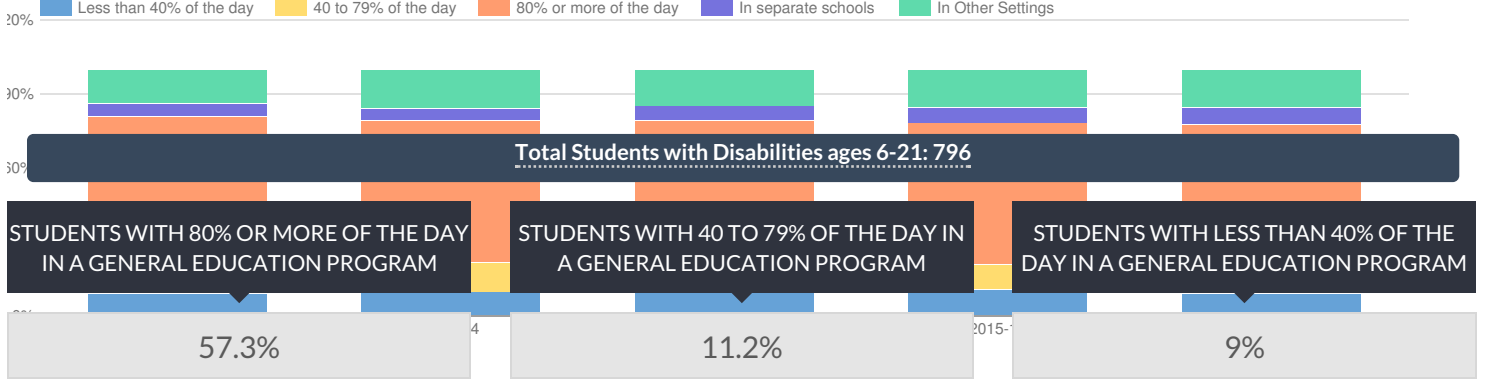
State target and does district meet target

No school districts will have disproportionality that is the result of inappropriate policies, practices and procedures.

Yes, met state target

Indicator 5: School-age Least Restrictive Environment (LRE)

West Islip Union Free School District % of Students with Disabilities (Ages 6-21) in Least Restrictive Environment



State target and does district meet target

Greater than or equal to 59%	No, did not meet state target
------------------------------	-------------------------------

State target and does district meet target

No State Target	Not Applicable
-----------------	----------------

State target and does district meet target

Less than or equal to 20%	Yes, met state target
---------------------------	-----------------------

STUDENTS WITH DISABILITIES IN SEPARATE SETTINGS

7.2%

State target and does district meet target

Less than or equal to 5.6%	No, did not meet state target
----------------------------	-------------------------------

STUDENTS WITH DISABILITIES IN OTHER SETTINGS

15.3%

State target and does district meet target

No State Target	Not Applicable
-----------------	----------------

Indicator 6: Preschool Least Restrictive Environment (LRE)

Total Students with Disabilities: 117

STUDENTS WITH DISABILITIES WITH MEASUREMENT A

19.7%

State target and does district meet target

45.0% or higher	No, did not meet state target
-----------------	-------------------------------

STUDENTS WITH DISABILITIES WITH MEASUREMENT B

13.7%

State target and does district meet target

20.0% or lower	Yes, met state target
----------------	-----------------------

Indicator 7: Preschool Outcomes

This district is not required to report for Indicator 7 for 2016-17 please see <http://www.p12.nysed.gov/sedcar/data.htm#subsched> for the school year in which this school district will report data for this indicator.

Indicator 8: Parental Involvement

Number of completed surveys 97

PERCENT OF PARENTS WHO REPORTED THAT SCHOOLS FACILITATED PARENT INVOLVEMENT TO IMPROVE SERVICES AND RESULTS FOR STUDENTS WITH DISABILITIES

86.6%

State target and does district meet target

94% or higher

No, did not meet state target

Indicator 9: Disproportionality - Identification for Special Education

DISPROPORTIONATE REPRESENTATION IN SPECIAL EDUCATION?

No

State target and does district meet target

No school districts will have disproportionality that is the result of inappropriate policies, practices and procedures.

Yes, met state target

Indicator 10A: Disproportionality in Specific Disability Categories

DISPROPORTIONATE REPRESENTATION IN SPECIFIC DISABILITY CATEGORIES?

No

State target and does district meet target

No school districts will have disproportionality that is the result of inappropriate policies, practices and procedures.

Yes, met state target

Indicator 10B: Disproportionality in Special Education Placements

DISPROPORTIONATE REPRESENTATION IN PARTICULAR SETTINGS?

No

State target and does district meet target

No school districts will have disproportionality that is the result of inappropriate policies, practices and procedures.

Yes, met state target

Indicator 11: Timely Evaluations (Child Find)

This district is not required to report for indicator 11 for 2016-17 please see <http://www.p12.nysed.gov/sedcar/data.htm#subschedule> for the school year in which this school district will report data for this indicator.

Indicator 12: Early Childhood Transition

Percent of children with IEPs who transitioned from early intervention services (Part C) to preschool special education services (Part B) and received their preschool special education services by their third birthdays consistent with State law.

NUMBER OF CHILDREN WHO WERE SERVED IN PART C AND REFERRED TO PART B FOR ELIGIBILITY DETERMINATION)

11

NUMBER OF THOSE REFERRED DETERMINED TO BE NOT ELIGIBLE AND WHOSE ELIGIBILITIES WERE DETERMINED PRIOR TO THEIR THIRD BIRTHDAY

1

NUMBER OF THOSE FOUND ELIGIBLE WHO HAD AN IEP DEVELOPED AND IMPLEMENTED BY THEIR THIRD BIRTHDAY

2

NUMBER OF CHILDREN FOR WHOM DELAYS IN DETERMINATION OF ELIGIBILITY OR DELAYS IN IMPLEMENTING THE IEP WERE CAUSED BY REASONS THAT ARE IN "IN COMPLIANCE" WITH STATE REQUIREMENTS

8

PERCENT OF CHILDREN WITH IEPS WHO TRANSITIONED FROM EARLY INTERVENTION SERVICES (PART C) TO PRESCHOOL SPECIAL EDUCATION SERVICES (PART B) AND RECEIVED THEIR PRESCHOOL SPECIAL EDUCATION SERVICES BY THEIR THIRD BIRTHDAYS.

100%

State target and does district meet target

100%

Yes, met state target

Indicator 13: Secondary Transition

This district is not required to report for Indicator13 for 2016-17 please see <http://www.p12.nysed.gov/sedcar/data.htm#subschedule> for the school year in which this school district will report data for this indicator.

Indicator 14: Post-School Outcomes

This district is not required to report for Indicator 14 for 2016-17 please see <http://www.p12.nysed.gov/sedcar/data.htm#subschedule> for the school year in which this school district will report data for this indicator.

© COPYRIGHT NEW YORK STATE EDUCATION DEPARTMENT, ALL RIGHTS RESERVED.

THIS DOCUMENT WAS CREATED ON: OCTOBER 14, 2019, 5:22 PM EST